

# Getting Acquainted with Music Notation



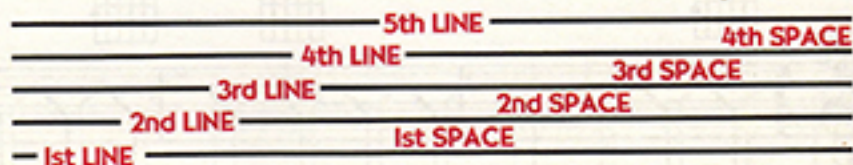
## Notes

Musical sounds are represented by symbols called *notes*. Their time value is determined by their color (black or white), and by stems and flags attached to them.



## The Staff

Each note has a name. That name depends on where the note is found on the *staff*. The staff is made up of five horizontal lines and the spaces between those lines.



## The Music Alphabet

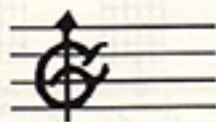
The notes are named after the first seven letters of the alphabet (A-G).



## Clefs

As music notation progressed through history, the staff had from two to twenty lines, and symbols were invented that would always give you a reference point for all the other notes. These symbols were called *clefs*.

Music for the guitar is written in the *G* or *treble clef*. Originally, the Gothic letter G was used on a four-line staff to show the pitch G.



This developed into the modern clef:

